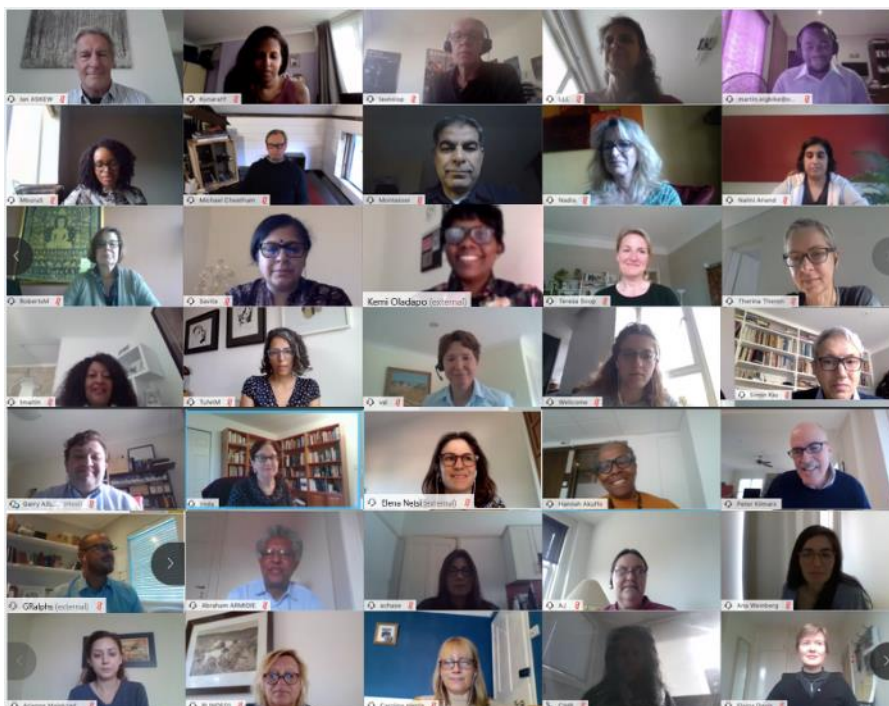


## ESSENCE Members Meeting 2020: Importance of Research Capacity for Our Time

**27 April 2020**  
**Via WebEx**

**14:00 – 16:30 Central European Time**



## Meeting Minutes

**Encl.:** Annex 1 – Agenda  
Annex 2 – COVID-19 and Horizon Scanning Feedback

**Attch.:** List of Participants  
Essentials of ESSENCE (revised 27 April version)  
PowerPoint Presentations (available upon request)

**1. Welcome and overview of the programme - Hannah Akuffo, Sida; Linda Kupfer, FIC/NIH**

The co-chairs welcomed all participants and thanked them for their continuous engagement. The objectives of the meeting were presented, and the participants invited to have an active and engaged discussion throughout the meeting. This was immediately followed by a review of the agenda.

**2. COVID-19 and Horizon Scanning - Garry Aslanyan, ESSENCE Secretariat, TDR**

Garry informed that the participants were asked in advance to complete a short questionnaire on their current programmes or efforts in global health and in the context of COVID-19 outbreak as the meeting was virtual and shorter. Noted that this information would have been provided individually during the roundtable session where ESSENCE members meet face-to-face. Highlighted that a considerable number of the respondents mentioned in particular specific topics and themes that the initiative could focus on (i.e. research costing, gender-based violence, health systems and research capacity), noting COVID-19 was one of the important area mentioned.

He informed that the co-chairs have expressed preference for a separate session with all members interested in coordinating resources and actions with other funders to further discuss on agencies experiences, thematic work, COVID-19 related research and the lessons learned from the pandemic. From the several discussions on research capacity strengthening (RCS) in the context of COVID-19, it was noted that having built in capacity and awareness of networks is a great role for ESSENCE especially where funders are seeking to know where the research capacity is relative to where they are needed. The responses have been summarized and are annexed to these minutes.

**Action:**

- ***ESSENCE SC to discuss and plan for a separate meeting to further discuss on agencies thematic work, collaboration opportunities in research capacity in the context of COVID-19 and related research. The meeting will be open to any interested member.***

**3. ESSENCE Mechanism on Reviewing Investments – Peter Kilmarx, FIC/NIH and Thabi Maitin, MRC South Africa, Co-chairs Working Group on Reviewing Investments (WGRI)**

A short presentation was given by way of background and an update on the progress of the ESSENCE mechanism. The report focuses on a number of recommendations made by the international vaccine task force (convened by the World Bank and CEPI<sup>1</sup> in 2018), and one of which directly mentioned ESSENCE to articulate a mechanism for review of investments as that was lacking to review investments and coordinate networks. The proposed coordination [Mechanism](#) developed in 2019 was subsequently endorsed by ESSENCE members in the same year. WGRI is continuing work on implementing the mechanism with the task divided into three topic areas including data and metrics, coordination and critical gaps. The PowerPoint presentations are attached to these minutes.

During the discussion:

- The topic leads emphasized the usefulness of the session especially in bringing participants' expertise and knowledge to contribute to the process of selecting countries with critical gaps to ensure a reasonable geographical representation is achieved, and ideas on specific collaboration models on research capacity building in low resource setting either at this meeting or via email.
- The questions on whether the proposal is to use the deep dives to test the validity of the framework or whether the evaluation of the use of the metrics considered only health or the general science phase were raised by the participants, and thoughts on the classification of research capacity of countries versus their needs. It was emphasized that this is an important initiative but how these findings will be interpreted in the future in terms of planning funding opportunities would be very significant.

---

<sup>1</sup> CEPI - The Coalition for Epidemic Preparedness Innovations

- The group clarified that this is a snapshot into research capacity and exclusively focused on health. For the initial June 2020 meeting of the mechanism, the task is to come up with a minimum viable product that would give a very realistic and adequate insights into research capacity globally. Information drawn from the meeting perhaps, can be incorporated in the follow up recommendations especially on the need for greater clarity and transparency on key indicators for research capacity in the countries.
- Overall the participants were excited to see where this important work goes, building on the last stakeholder engagement and WGRI's progress to date. Plans and preparation are well underway for the inaugural virtual meeting of the mechanism, 4-5 June 2020.

**4. ESSENCE Good Practice Document: Research Management – Hannah Akuffo; Garry Aslanyan; Gerard Ralphs, Consultant, Research Costing GPD; Therina Teron, SARIMA; Allen Mukhwana, AAS; Savita Ayyar, IRMI**

Garry and Gerard gave brief presentations on the second edition of the *five keys* document first published in 2012 in [English](#) and later translated to [French](#) and [Spanish](#) using examples to show what has and has not worked in different situations. It was clear from the feedback that the document was unmatched by any other initiative from the global level with additional value, as well as a lot of changes that had happened at the global, regional and national level in terms of funding of research, making the need for ongoing learning critical. Against this background, ESSENCE research management working group met and agreed to update the document to help researchers and funders find the best way to cost research, with support provided to this area of work by the International Development Research Centre (IDRC) and African Academy of Sciences (AAS). In response to the feedback from the first edition, some members developed good training materials to help those who wanted to disseminate the document within their organizations.

During the discussion on dissemination, use and application of the revised document, the three panellist thanked the ESSENCE group for undertaken this piece of work, and agreed that the second edition is a valuable document that is essential especially for under-capacitated/under resourced institutions. Highlighted that it can serve to promote equality of research partnerships and be used in grants management course, for instance, the Postgraduate Diploma in Research Management and Administration that is expected to be rolled out by SARIMA and offered by Stellenbosch University Centre for Evaluation, Science and Technology (CREST).

Overall, they underlined its usefulness particularly being a strategic management tool for institutional leadership that has lead to changes in practices in their institutions, as well as a reminder that research management (RM) is a global practice even though it may be new in some countries context.

The following actions in regard to dissemination were discussed by the panellist in terms of the synergy with their objectives and strategic goals:

- SARIMA would partner with ESSENCE to promote the education of the document, assist with measuring organizational change through a survey membership base, share success stories, add the document to its policy repository, and present the document at ad-hoc workshops or sessions at its annual conferences (perhaps in August), as well as share case studies.
- African Academy of Sciences (AAS) are convening a meeting mainly of RM professionals in the different associations to discuss how to sustain RM function and the enterprise at the institutions, and issues relating to the professional associations in the continents by sharing experiences from partners in Europe, US and Australia - the document could be used at this event. Are also establishing a community of practice for RM professionals, the research costing document is one of the resources viewed as a reference material for building policies and procedures for their different research enterprises.
- India Research management initiative (IRMI) was planning a conference in 2020 but now postponed to 2021 due to the global health crisis, noting the document could be circulated to IRMI member institutions and disseminated when the conference takes place face-to-face. It could also be useful particularly for Indian researchers, especially keys 4 and 5 with the process of generating indirect cost. Considers it useful in addition to the members having the document, for ESSENCE, SARIMA & AAS to

plan a webinar or an interactive forum where some of the ideas could be discussed to help reinforce the concepts.

**5. ESSENCE Good Practice Document: Implementation Research – Linda Kupfer; Ana Lúcia Weinberg, EDCTP; Elena Netsi, Wellcome; Abraham Aseffa, TDR; Barbara van der Linden, EViR**

Ana Lúcia Weinberg gave a short presentation on the newly developed implementation research (IR) good practice document to lead off the discussion on dissemination, use and application, and how best to measure impact on organizational change. Her PowerPoint presentations are attached to these minutes.

During the discussion, valuable feedbacks were received from the panellist and a number of general comments on dissemination and application of the new document were discussed:

- Underlined that the document gives diverse examples that are embedded with case studies and an overview of the landscape in a quick way for funders who might want to consider coming into this space and what funders need to be doing in order to maximize investment at the minimum.
- Emphasized the document advocates strategic support for IR, acknowledges diversity as the area is evolving and provides insight to recipients of grants to understand the thinking among funders which could help align their applications and research activities.
- The question was raised whether there was any communication with recipients to understand their view points, how they see the principles and what they consider as important. Noting it is essential to articulate this more clearly in the document to show they have been consulted, as well as the alignment of funders within the countries.
- Mentioned this could also be a valuable document for high income countries as funding implementation and IR is not as clear as it should be based on the results of a recent survey conducted by EViR Funders' Collaboration and Development (Presentations attached to these minutes). Commented that the document should be more explicit on what is being done in the areas of IR, IS and implementation.

Following the discussion, some initial thoughts on dissemination and application were shared:

- The International conference of implementation and scale-up (established by BRAC JGSPH in collaboration with UNICEF and TDR), would be a great forum to launch the document and the Global Symposium on Health Systems Research for policy makers and researchers to help bring the community of practice and funders together. Helping such forums through ESSENCE to get established could help the document to become widely used. Platforms, networks, workshops or webinars could also be considered or a commentary in a journal for the launch to ensure wider reach.
- Collecting data from funders through interviews or survey as the document get used and picked up to see how it is being used or the investments that others have made as a result of the document was also advocated.
- Underlined it is clear from the rich discussion that IR is beyond the health systems and very multidisciplinary. It is essential for ESSENCE as a group to ensure it brings in the scope of IR discipline to interact and engage, and the policy makers in the local environment to procreate.
- In response to specific comments on dissemination, EViR will circulate within their membership and ask each country to disseminate to other funders working more in LMICs, as well as invite ESSENCE members who are funders to collaborate, and perhaps organize a webinar to exchange documents, expertise and experience.
- On measuring impact on organizational change, a note was made to assess part of the GPD impact (perhaps the impact assessment on funders or recipients on the capacity as it generates to the IR or IS), noting it might be difficult to tease out what the contributions of a particular document could be.

**GOOD PRACTICE DOCUMENT ENDORSEMENTS:**

ESSENCE members were invited by the co-chairs, Linda Kupfer and Hannah Akuffo to support and endorse the two documents presented: *Five keys to improving research costing and pricing in LMICs (Second edition)* and *Seven approaches to investing in implementation research in LMICs*.

**Action(s):**

- ***ESSENCE members unanimously endorsed the documents for adoption.***
- ***Steering Committee will approve the next steps in discussion with the research management (RM) and implementation research (IR) working groups.***
- ***RM and IR leads to follow up with the specific actions proposed by SARIMA, AAS, IRMI and EViR on dissemination, use and application of the documents.***

**6. ESSENCE Governance and coordination: Membership – Garry Aslanyan**

Background document: [The Essentials of ESSENCE Document](#)

- Garry mentioned that ESSENCE is guided by the principles outlined in the Essentials document developed and approved by the members, noting in the last few years the membership has expanded and the inclusion or exclusion of organizations currently presents the need to further tighten the criteria for membership. The priority is to ensure inclusion of clear criteria by which new members (funders, initiatives or broader institutions) were invited to join and participate in ESSENCE meetings while ensuring adequate balance across type of organizations.
- Clarified that the criteria require strong commitment of current and any new potential members to recognize the essence of working together to coordinate the efforts of funders to address needs in the areas specified in the document.
- The proposed criteria for membership and participation reviewed by ESSENCE steering committee to be updated in the document were presented to the members present for comments and endorsement.

**ENDORSEMENT:**

- The revised criteria for membership and participation were endorsed by the members present.

**7. Concluding remarks - Hannah Akuffo and Linda Kupfer, Co-chairs ESSENCE**

The co-chairs thanked the participants for their active participation and inputs, and for engaging in such fruitful and constructive exchanges throughout the meeting on how to work collaboratively and strategically to strengthen research capacity in LMICs especially with COVID-19 lessons learned, and the clear ways forward on the good practice documents. They look forward to welcoming everyone in 2021.

## Annex 1 – **AGENDA**

### Monday 27 April

13:55	<b>Participants should connect at least 5 minutes in advance. Please use WebEx platform if possible and identify your name.</b>
14:00	<b>1: Information on the meeting and participants</b> <ul style="list-style-type: none"> <li>▪ <b>Garry Aslanyan</b>, TDR and ESSENCE Secretariat</li> </ul>
14:05	<b>2: Welcome and overview of the programme</b> <ul style="list-style-type: none"> <li>▪ <b>Linda Kupfer</b>, Co-Chair ESSENCE, Senior Scientist, Fogarty International Center - National Institutes of Health (FIC/NIH);</li> <li>▪ <b>Hannah Akuffo</b>, Co-Chair ESSENCE, Senior Specialist, Methods in Research Cooperation, Swedish International Development Cooperation Agency (Sida)</li> </ul>
14:10	<b>3: COVID19 and Horizon Scanning</b> <p><b>Item Chair - Hannah Akuffo</b>, Co-Chair ESSENCE <b>Item time: 30 minutes</b></p> <ul style="list-style-type: none"> <li>▪ Summary of virtual feedback provided by ESSENCE members</li> <li>▪ Trends, gaps, opportunities in health research capacity in LMICs in the context of COVID19</li> <li>▪ Identifying Global health issues and priorities ESSENCE to focus on</li> </ul>
14:40	<b>4: ESSENCE Mechanism on Reviewing Investments</b> <p><b>Item Chair – Linda Kupfer</b>, Co-Chair ESSENCE <b>Item time: 20 minutes</b></p> <ul style="list-style-type: none"> <li>▪ Update on progress of the ESSENCE Working Group on Review of Investments (WGRI) preparing for the first periodic meeting on coordination of investments in health research capacity building in June 2020.</li> <li>▪ Input will be solicited on the meeting plans and draft background paper, which will be circulated to participants in advance.</li> </ul> <p><b>Peter Kilmarx</b>, Co-Chair WGRI, Deputy Director, Fogarty International Center, U.S. National Institutes of Health (FIC/NIH);</p> <p><b>Thabi Maitin</b>, Co-Chair WGRI, Division Manager, Research Capacity Development, South African Medical Research Centre (SAMRC)</p> <p><a href="#">Discussion / Follow up steps</a></p>
15:00	<b>5A: ESSENCE Good Practice Document: Research Management</b> <p><b>Item Chair – Hannah Akuffo</b>, Co-Chair ESSENCE <b>Item time: 40 minutes</b></p>



- *Presentation of the revised ESSENCE good practice document: **Five keys to improving research costing and pricing in LMICs.***
- *This document is being presented for endorsement by ESSENCE members.*
- *After presentation, we will have Input from panellists and members on dissemination, use, application of the new document as well as how best to measure impact of the document on organizational change.*

*Presenter*

- **Garry Aslanyan/Karin Dyson/Gerard Ralphs, ESSENCE**

*Panellists*

- **Therina Teron**, Southern African Research and Innovation Management Association (SARIMA)
- **Allen Mukhwana**, African Academy of Sciences (AAS)
- **Savita Ayyar**, India Research Management Initiative (IRMI)

Discussion / Follow up steps

15:40 **5B: ESSENCE Good Practice Document: Implementation Research**

**Item Chair – Linda Kupfer**, Co-Chair ESSENCE

**Item time: 40 minutes**

- *Presentation of the new ESSENCE good practice document: **Seven approaches to investing in implementation research in LMICs.***
- *This document is being presented for endorsement by ESSENCE members.*
- *After presentation, we will have Input from panellists and members on dissemination, use, application of the new document as well as how best to measure impact of the document on organizational change.*

*Presenter*

- **Ana Lucia Weinberg, EDCTP**

*Panellists*

- **Elena Netsi**, Wellcome
- **Abraham Aseffa**, TDR at WHO
- **Barbara van der Linden**, Ensuring Value in Research (EViR) funders initiative

Discussion / Follow up steps

16:20 **6: ESSENCE Governance and coordination: Membership**

**Garry Aslanyan** (TDR and ESSENCE Secretariat)

**Essentials of ESSENCE** - revised membership criteria on page 9

Potential opportunities for future meetings.

**Wrap up – co-chairs**

Adjourn at 16:30

## Annex 2 – COVID-19 and Horizon Scanning Feedback

### a. BMBF - DLR-PT on behalf of the Federal Ministry of Education and Research (**Sabrina Voss**)

- The BMBF initiated several national COVID19 funding measures:
  - Rapid response call with 4 different Modules (total budget 15 Mio. €)  
Funding for a period of up to 18 months is available in the following modules:
    - Module 1 - Combating COVID-19 through early clinical studies for the application of already known therapeutic approaches to Sars-CoV-2
    - Module 2 - Control of COVID-19 through new therapeutic and diagnostic approaches
    - Module 3 - Research that contributes to the understanding of the virus and its spread
    - Module 4 - Support of already ongoing research projects on corona viruses
  - Additional support of CEPI for research and development of a vaccine against nCoV-2019 (total budget 140 Mio. €)
  - Funding the establishment of a scientific research network at Charité Berlin to bundle and strengthen the research activities of German university medicine to deal with the current pandemic crisis (total budget 150 Mio. €)
  - Lean European Open Survey for SARS-CoV-2 Infected Patients (LEOSS-Register) of the German Center for Infection Research
  - Coordination of the German Part of the WHO-Solidarity Trial by the German Centers for Infection Research and for Lung Research
- General Global Health funding measures:
  - Continued cash support to EDCTP, CEPI, GARD-P, Global AMR R&D Hub, JPIAMR, Carb-X
  - New since 2019:
    - French-German Call for Projects on Antimicrobial Resistance 2020 (2019-2023, 7 Mio. €)
    - Programme for young academics in Infection Research (2020 onwards, 45 Mio. € for 5 years)
    - Grand Challenges Africa – Joint Call on Mother, Neonatal and Child Health (start in 2020, up to 7 Mio. € in 2 stages)
    - German Alliance for Global Health Research (started 2/2020, funding 10 Mio €, for 5 years)

### b. Carnegie Corporation (**Andrea Johnson**)

We are a research capacity development funder where some funded projects fall within the global health rubric. For example, we support the Consortium for Advanced Research Training in Africa (CARTA) in the population and public health field; clinical medical researcher development at the University of the Witwatersrand; and doctoral and postdoctoral programming in infectious diseases at the University of Cape Town.

### c. Department of Sexual and Reproductive Health and Research, WHO (**Ian Askew**)

HRP is supporting 3 research efforts: 1) prospectively collect and analyze data on effect of COVID on maternal and perinatal health; 2) build capacity of LMIC research institutions to participate in clinical trials and other research on COVID-SRHR interactions; 3) document and learn lessons on health systems responses to providing SRHR services during the pandemic.

### d. DBT/Wellcome Trust India Alliance (**Savita Ayyar**)

The India Alliance funds research in health and biomedical sciences in India and invests in transformative ideas and supportive research ecosystems to advance discovery and innovation to improve health and well-being.

### e. DHSC - Department of Health and Social Care (**Elaina Davis**)

The Department of Health and Social Care (DHSC), through the National Institute of Health Research (NIHR) has contributed to a number of activities relating to global health in the context of COVID-19:



- Research for Health in Humanitarian Crises COVID-19 call is now live. The call (with 3 deadlines) aims to fund public health research that produce robust findings that contribute to the effectiveness of the humanitarian response and increase the evidence base for future responses to similar infectious disease outbreaks, through partnerships between humanitarian organisations and academics. This is supported through NIHR's R2HC partnership with DFID and Wellcome.
- NIHR are providing additional support to EDCTP for 3 COVID-19 related calls within their 2020 workplan. One is the emergency response call (launched 3 April closing 17 April), second are Regional Networks, and third is Capacity Development for disease outbreak and epidemic response in collaboration with the African CDC. The latter two both incorporate COVID-19 elements and close in July.
- Significant UK Government investment in the Coalition for Epidemic Preparedness Innovation for COVID-19 have included £20M from DHSC.
- Discussions are continuing regarding a possible new LMIC-focussed research funding call with other UK funders based on the WHO COVID-19 Research Roadmap.

DHSC contribute to the UKCDR/GLoPID-R COVID-19 Research Project Tracker This is a live database of funded research projects across the world related to the current COVID-19 pandemic. By providing an overview of research projects mapped against the priorities identified in the WHO Coordinated Global Research Roadmap: 2019 Novel Coronavirus, UKCDR aim to support funders and researchers deliver a more effective and coherent global research response.

**f. European and Developing Countries Clinical Trials Partnerships (Ana Lúcia Weinberg)**

The European & Developing Clinical Trials Partnership (EDCTP) is funding clinical research on infectious diseases to accelerate the development of new or improved drugs, vaccines, microbicides and diagnostics against HIV, tuberculosis, malaria, as well as other poverty-related infectious diseases, including emerging and re-emerging infections in sub-Saharan Africa. EDCTP has invited proposals for collaborative research studies to manage and/or prevent the spread of the current COVID-19 outbreak. Proposals have been asked to address the following research gaps:

Proposals submitted under this expression of interest must address one or more of the following research gaps:

- Understanding of the natural history of infection to better define the period of infectiousness and transmissibility; improve surveillance capabilities to more accurately estimate the reproductive number in various outbreak settings and improve understanding of the role of asymptomatic infection in transmission.
- Promote the development, adaptation, evaluation, and implementation of point-of-care diagnostic tests that can be used to screen all patients presenting with a history consistent with COVID-19 infection.
- Support standardised, best evidence-based approaches for clinical management and better health outcomes for patients by contributing to the implementation of randomised, controlled trials for diagnostics and therapeutics as promising agents emerge, taking usability, including multi-centre/country trials and access in resource-constrained settings, into account.
- Validation and adaptation of existing serological tests, including those that have been developed by commercial entities, and establishment of biobanks and serum panels of well characterised COVID-19 to support such efforts.

More information: <https://www.edctp.org/call/mobilisation-of-funding-for-covid-19-research-in-sub-saharan-africa/>

**g. European Commission (Gianpietro van-de-Goor)**

See 'highlights' and 'latest' news at [https://ec.europa.eu/info/research-and-innovation/research-area/health-research-and-innovation/coronavirus-research-and-innovation\\_en](https://ec.europa.eu/info/research-and-innovation/research-area/health-research-and-innovation/coronavirus-research-and-innovation_en)

**h. Fogarty International Center / U.S National Institutes of Health (Linder Kupfer & Peter Kilmarx)**

In December 2019, an outbreak of COVID-19, an acute respiratory illness caused by the novel coronavirus SARS-CoV-2, was detected in mainland China. Researchers have been tracking the spread of the virus, have

developed diagnostic testing for 2019-nCoV and are working on a number of vaccines to protect against 2019-nCoV. The National Institute of Allergy and Infectious Diseases (NIAID) leads NIH's research and response on coronaviruses. Get the latest research information from NIH: <https://www.nih.gov/coronavirus>

NIH is working on COVID19 in many ways. Fogarty has a website that links to all global efforts and it is updated continuously and is the best place to learn about what NIH and other research institutions are doing for COVID19: <https://www.fic.nih.gov/ResearchTopics/Pages/infectiousdiseases-coronavirus-cov.aspx>. NIAID Strategic Plan for COVID-19 Research: <https://www.niaid.nih.gov/sites/default/files/NIAID-COVID-19-Strategic-Plan-2020.pdf>. I also wanted to mention that Fogarty will be leading a new trans NIH Initiative on data science in Africa. A synopsis of the program is below but the website for the program is here: <https://commonfund.nih.gov/AfricaData>

The NIH Common Fund's Harnessing Data Science for Health Discovery and Innovation in Africa program will leverage data science technologies and prior NIH investments to develop solutions to the continent's most pressing public health problems through a robust ecosystem of new partners from academic, government, and private sectors. Despite recent progress, Africa carries a disproportionate share of the global burden of disease. In the next decade, rapid advances in data science are expected to transform biomedical and behavioural research and lead to improved health for individuals and populations. While data science applications are largely undeveloped in Africa, there are opportunities to utilize data science to impact health outcomes on the continent and around the world, including in the United States. Africa carries unique populations, genes, and exposures. Therefore, tools developed in high-income countries that are based on European populations' data often cannot be applied in the African context. Though data science expertise exists in Africa, it is scarce and scattered throughout the continent. Health data scientists are needed to conduct policy analyses as Ethical, Legal, and Social Implications (ELSI) of data science research in Africa present challenges. There is a high need for clinical decision support due to a critical shortage in the medical workforce.

Many of the enabling factors for a catalytic impact are already in place. Extensive mobile phone coverage in Africa has led to major innovations that could bring the clinic to the patient through data science technologies, with applications to rural and underserved populations in the United States and worldwide. A unique continental network of data scientists and engineers could be transformative, bringing together existing expertise to develop tools and applications that can be shared, adopted, and harmonized globally. Health data scientists conducting ELSI studies on data science research and its applications to public health in Africa may help impact policy on the continent. The program's interdisciplinary teams will build on years of NIH investments in Africa to develop comprehensive strategies to address public health challenges.

NIH is leading efforts in medical countermeasures - diagnostics, therapeutics, vaccines - as well as research on basic science, pathogenesis, genomics, co-morbidities, clinical management, data science, surveillance, behavioural science, vulnerable populations, etc. Most is focused on USA. Fogarty planning support for pathogen genomic surveillance and training on modelling and pandemic research preparedness.

i. **Fondation Mérieux (Leticia Lobo)**

- Strengthening local SARS-CoV-2 diagnostic capacity; and
- Launching a research protocol to limit nosocomial transmission (<https://www.fondation-merieux.org/en/the-merieux-foundation-deploys-diagnostic-and-research-expertise-on-the-ground/> )

j. **Human Sciences Research Council (Gerard Ralphs)**

In my full-time capacity I work with the Human Sciences Research Council of South Africa (HSRC). The HSRC has a long track record of health-related research, including and especially within HIV/AIDS.

The HSRC is currently in field to collect data on public perceptions of COVID19, to include a survey of health workers. For more information, please visit [hsrc.ac.za](http://hsrc.ac.za).

k. Institut Pasteur (**Nadia Khelef**)

Research, clinical research, internal funding, capacity strengthening:

<https://www.pasteur.fr/en/press-area/coronavirus-sars-cov-2-institut-pasteur-mobilization>

l. International Development Research Centre (**Montasser Kamal**)

Focus on two paths: medical counter-measures, as well as public health and socio-behavioural perspectives. Balanced attention to rapid response balanced with attention to health system preparedness and resilience in LMICs, especially focusing on refugee and displaced and other fragile populations.

m. SARIMA/Stellenbosch University (**Therina Theron**)

SARIMA focuses on research and innovation management professionalization and capacity development - providing support to our research and innovation community in the time of Covid-19.

n. South African Medical Research Council (**Thabi Maitin**)

<https://www.samrc.ac.za/news/south-africas-war-covid-19>

o. Swedish International Development Agency (**Hannah Akuffo**)

Sida currently long term support for research capacity strengthening in a holistic way to targeted National universities in Bolivia, Cambodia, Ethiopia, Mozambique, Rwanda, Tanzania, Uganda. All these have a health research component except for Cambodia, which is a new cooperation where the efforts, in accordance with the wishes of the university and Ministry of Science & Technology are focused on STEM (Sci., Technology, Engineering, Mathematics). The cooperation is likely to expand after this phase. Sida is EXPLORING the possibilities to start institutional research cooperation with Myanmar.

Furthermore, Sida has commissioned a number of studies that will inform us on how to support countries in conflict areas with research capacity strengthening such as Somalia and Palestine. Sida will continue to support Arab Council for Social Sciences. At the same time after supporting Makerere university since 2001 (where "Research for Health" is a large component), within this time Makerere University has taken the responsibility to provide capacity building to 5 of the newer national universities ("Obuntu"), Sida is embarking on a phasing-out stage of the Makerere cooperation, recognising that the "Mission is accomplished for Capacity Building". Other forms of cooperation are being considered for continued engagement.

Sida continues to fund, together with other funders, various organisations who in turn finance research capacity e.g. EDCTP, TDR, HRP, Alliance for Health Policy and systems Research, icipe (African Insect Science for food and health), international Foundation for Science, CARTA (Consortium for Advanced Research Training in Africa), African Population and Health research Centre, icddr, International Vaccine Institute, Grand Challenges Africa, Joint Programming of Antimicrobial Resistance channelled through Sida's cooperation with African Academy of Sciences.

Sida will continue to fund communication of research through supporting INASP, AuthorAid (helping young scientists from across the world to improve their scientific writing), SciDev.net (which has programmes to train researchers in communication of science). With more funders and resources, these communication organisms could impact on a multitude of young scientists in Low income countries.

p. UK Collaborative on Development Research (**Marta Tufet; Sheila Mburu; Yaso Kunaratnam**)

UKCDR is supporting coordination of the research response through a) The COVID-19 Research Project tracker by UKCDR & GLOPID-R, which helps support decision-making on research needs and investments b) UKCDR Epidemic Preparedness and Response Funders group, supporting UK funders share relevant information, network and communicate to support coherence and collaboration in the funding and the use of research in

epidemics preparedness and response. c) supporting funders of development research align under common principles and supporting research coordination.

We convene UK global health research funders to discuss health more broadly, but also epidemics through our epidemics preparedness group. We have also published guidance on equitable research partnerships and more recently safeguarding in international development research.

UKCDR and GloPID-R have developed a live database of funded research projects on COVID-19 that will help funders and researchers identify gaps and opportunities and inform future research investments or coordination needs. UKCDR also participated and contributed to the report from the Global research and innovation forum: towards a research roadmap.

UKCDR COVID-19 research project tracker: <https://www.ukcdr.org.uk/funding-landscape/covid-19-research-project-tracker/>

q. Wellcome (**Simon Kay**)

Creation of emergency fund; Support for vaccines through CEPI; Therapeutics Accelerator; therapeutics trials; funding urgent supplies of PPE to LMIC programmes; policy advocacy through multilateral organisations; support to create COVID fund at the AAS; support for clinical researchers to return to bedside; extension of Fellow's grants to enable them to manage through this period; significant advocacy to mobilize resources.

r. ZonMw (**Barbara van der Linden**)

- ZonMw supports Covid-19 related research see: <https://www.zonmw.nl/en/about-zonmw/coronavirus/research-on-corona-and-covid-19/>.

ZonMw has taken measures to adapt its procedures for ongoing and new non-Covid-19 related research: <https://www.zonmw.nl/en/about-zonmw/coronavirus/main-measures/>